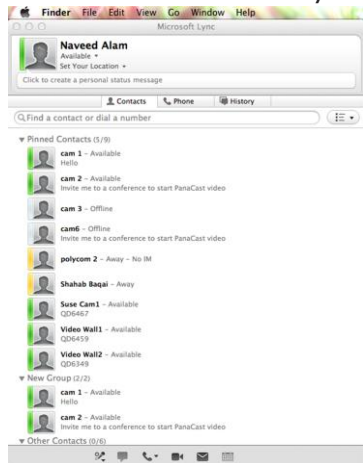




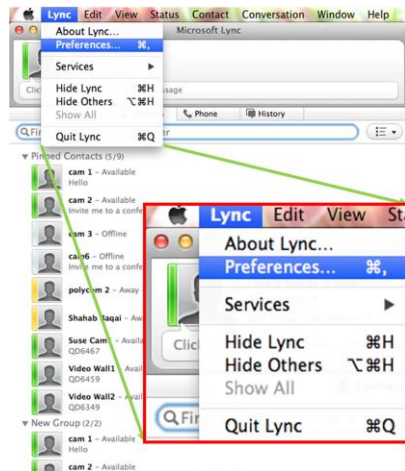
## (1) Make a Microsoft Lync Call

- This is the screen that will appear when you want to make a call in Microsoft Lync.



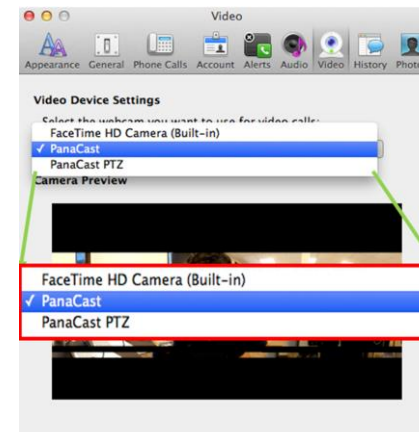
## (2) Access Call Settings

- To change your video settings click “Lync” in the task bar and select “Preferences...”



## (3) Select PanaCast Camera

- Click the “Video” tab and select “PanaCast” in the video settings drop down menu.



## Digital Zoom with PanaCast ePTZ

PanaCast allows the host user to digitally pan, tilt and zoom in their video stream using the PanaCast ePTZ app. To find out more, please click [here](#) for instructions.



Altia Systems, Inc. | 10020 North De Anza Blvd., Suite 200 |  
Cupertino, CA 95014 | Office: 1(408) 996 9710

Contact us: [support@altiasystems.com](mailto:support@altiasystems.com)