



This document describes how to set up and run the PanaCast<sup>®</sup> Experience Plus on a Windows<sup>2</sup> PC for Microsoft<sup>®</sup> Lync<sup>®</sup>.

## Requirements

- Running Windows 7 or 8 with the Microsoft Lync client 2013 for desktop mode installed.

## Instructions

### Step 1: Download the PanaCast App

Go to the [Partners](#) page, login in with your credentials, and download and launch the PanaCast App. Partners page is located at <http://www.getpanacast.com/partners>

- Read the End-User Agreement and click 'I Agree.'

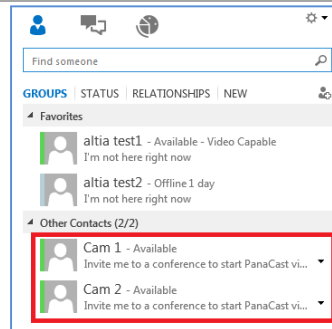


### Step 2: Sign In to Microsoft Lync

Sign in to your Microsoft Lync account (make sure that the PanaCast App is running).

PanaCast cameras will be in your 'Contacts' list – added by your Admin. For example, 'Cam 1' and 'Cam 2' are listed as contacts.

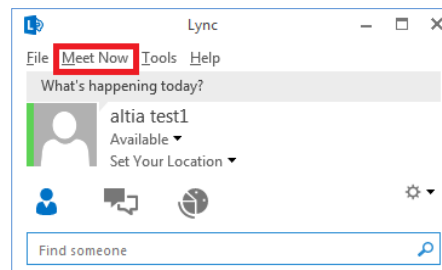
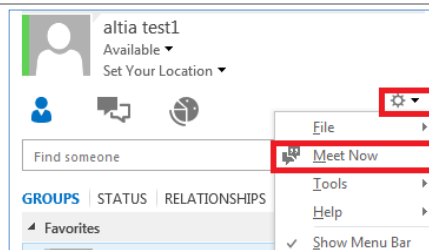
- Cameras will be shown as 'Available' when ready and not in use.



### Step 3: Start a Meeting

Click 'Meet Now' to start a meeting (there are two ways to do this):

- Either click 'Meet Now' from the drop down settings icon.
- Or, click 'Meet Now' on the menu bar at the top of the Lync client.



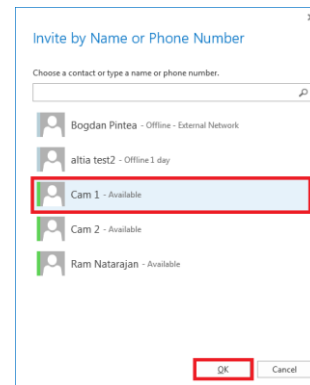
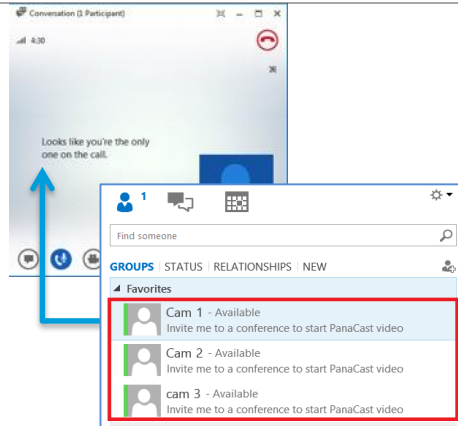
<sup>1</sup> Developed independently via SIP Extensions for Microsoft<sup>®</sup> Lync<sup>®</sup>

<sup>2</sup> Windows is a registered trademark of Microsoft Corporation in the United States and other countries.

## Step 4: Add a PanaCast Camera

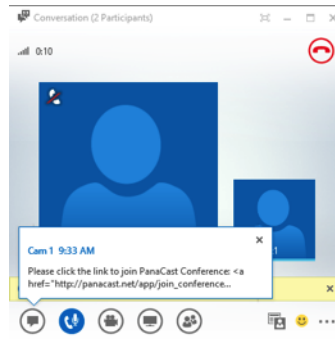
Add 'Cam 1' to the meeting (there are two ways to do this):

- Either drag 'Cam 1' from your 'Contact' list into the meeting.
- Or, click 'Participants,' select 'Invite More People,' click 'Cam 1' and then click 'OK.'



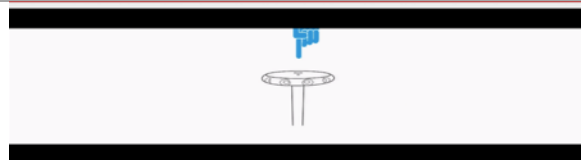
Once you have added a PanaCast Camera to the meeting, there are two things that will happen:

- You will receive a chat message containing a URL for your Meeting. If the new window does not auto-launch, click on the URL to start the session.
- A new video window will auto-launch, prompting you to authorize the session (as explained below).

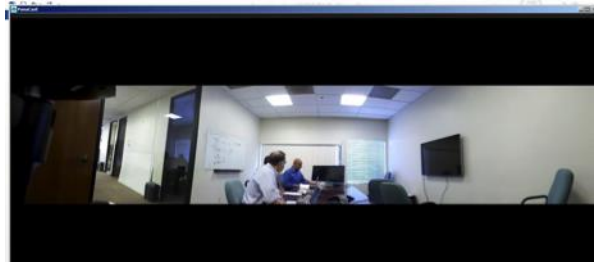


## Step 5: Authorize the Session

If configured, the security feature requires that you tap the center button on top of your camera. The solid white LED should begin to blink.

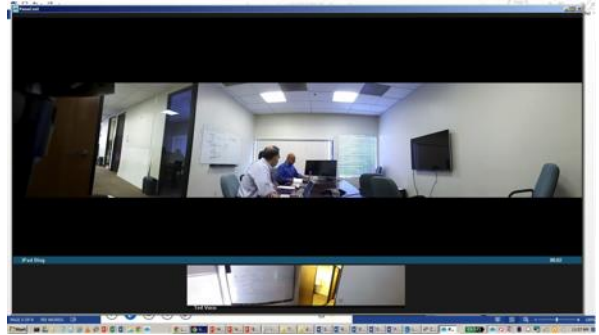


- The PanaCast video will launch.



### Step 6: Add More PanaCast Cameras

When a participant adds his or her own PanaCast camera into the conference, the video will display as a thumbnail.



### Step 7: End the Session

To properly end a session, click on the 'x' at the top right-hand corner of the Meeting.



### User Controls

The following gestures allow you to easily manipulate the video while in an PanaCast Integrated Experience session:

- Zoom: Press and hold CTRL + left-click on your mouse – scroll up and down with your mouse/track pad for zooming in and out
- Pan: Left-click on mouse and move in the direction that you want to see

Use the standard gestures if you have a touch PC

- Pinch to zoom
- Swipe right or left to pan

### About Altia Systems



Altia Systems, Inc.  
10020 N. De Anza Blvd, Suite 200  
Cupertino, CA 95015  
1-408-996-9710  
[www.getpanacast.com](http://www.getpanacast.com)



Altia Systems® ([altiasystems.com](http://altiasystems.com)) is a venture-backed company based in Cupertino, CA, and is the creator of the PanaCast® Experience solution. The award-winning PanaCast® offers a unique experience that enables anyone on desktop or mobile to communicate in interactive, real-time Panoramic-HD 200° field-of-view video that replicates the human panoramic perspective.