



This document describes how to set up and run PanaCast Experience for Microsoft Lync on Mac OS X.

Requirements

- Running Mac OS X with Microsoft Lync client installed

Instructions

Step 1: Download the PanaCast App

Go to the [Partners](#) page, login in with your credentials, and download and launch the PanaCast App. Partners page is located at <http://www.getpanacast.com/partners>

- Read the End-User Agreement and click 'I Agree.'

Mac OS X

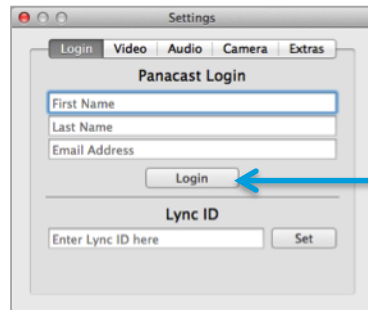


Step 2: Sign In to PanaCast

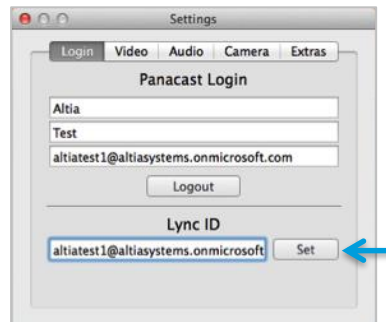
After installation, the PanaCast App will automatically launch. Click 'PanaCast' > 'Preferences.'



- Enter your Name and Email information within their respective fields on the 'Login' tab, and then click 'Login' to confirm your settings.



- Return to the 'Preferences' menu and enter your Microsoft Lync ID on the 'Login' tab, and then click 'Set.'



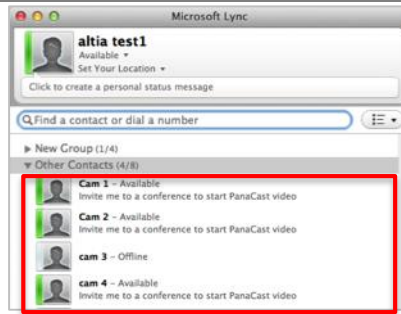
¹ Developed independently via SIP Extensions for Microsoft® Lync®

Step 3: Sign In to Microsoft Lync

Sign in to your Microsoft Lync account (make sure that the PanaCast App is running).

PanaCast cameras will be in your 'Contacts' list – added by your Admin. For example, 'Cam 1' and 'Cam 2' are listed as contacts.

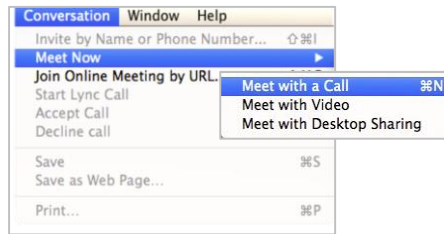
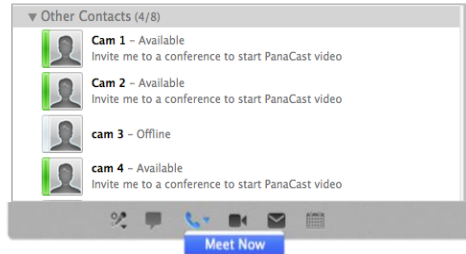
- Cameras will be shown as 'Available' when ready and not in use.



Step 4: Start a Meeting

Click 'Meet Now' to start a meeting (there are two ways to do this):

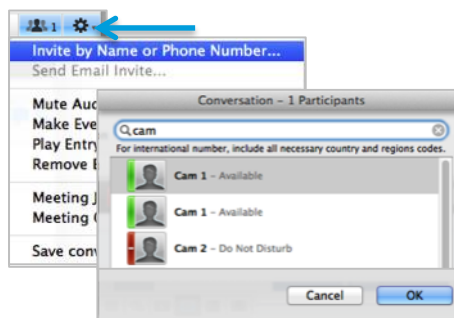
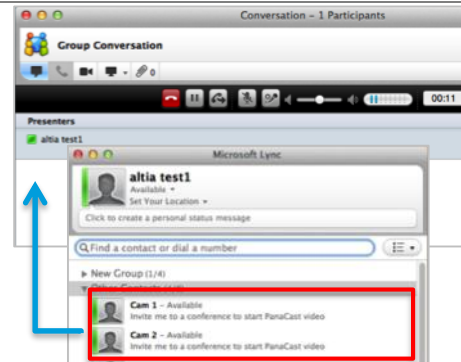
- Either click 'Meet Now' using the 'Call' icon at the bottom of your 'Microsoft Lync Contact' list.
- Or, click 'Conversation' > 'Meet Now' > 'Meet with a Call.'



Step 5: Add a PanaCast Camera

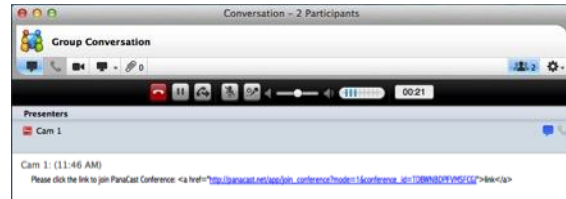
Add 'Cam 1' to the meeting (there are two ways to do this):

- Either drag 'Cam 1' from your 'Contacts' list into the meeting.
- Or, click the 'Settings' icon within your Meeting, select 'Invite by Name or Phone Number,' click 'Cam 1' and then click 'OK.'



Once you have added a PanaCast camera to the meeting, there are two things that will happen:

- You will receive a chat message containing a URL within your Meeting. If the new window does not auto-launch, click the URL to start the session.
- A new video window will auto-launch, prompting you to authorize the session (as explained below).



Step 6: Authorize the Session

If configured, the security feature requires that you tap the center button on top of your camera. The solid white LED should begin to blink.

- The PanaCast video will launch.



Step 7: Add More PanaCast Cameras

When a participant adds his or her own PanaCast camera into the conference, the video will be displayed as a thumbnail. Click once to open it within the main screen.



Step 8: End the Session

To properly end a session, click the red 'x' at the top left-hand corner of Meeting.



User Controls

The following gestures allow you to easily manipulate the video. These options can only be accessed through a trackpad.

Zoom Out = Pinch close

Zoom In = Pinch open

Pan = Swipe left/right

Fill Height/Fill Width = 2
Finger Double Tap



About Altia Systems



Altia Systems, Inc.
10020 N. De Anza Blvd, Suite 200
Cupertino, CA 95015
1-408-996-9710
www.getpanacast.com



Altia Systems® (altiasystems.com) is a venture-backed company based in Cupertino, CA, and is the creator of the PanaCast® Experience solution. The award-winning PanaCast® offers a unique experience that enables anyone on desktop or mobile to communicate in interactive, real-time Panoramic-HD 200° field-of-view video that replicates the human panoramic perspective.